



**MADE IN USA
LIBERATOR LLC
BOURBON MO.**

MODEL: RMH-1

GUARDIAN FIRE TESTING LABORATORIES INC
WWW.FIRETESTING.COM

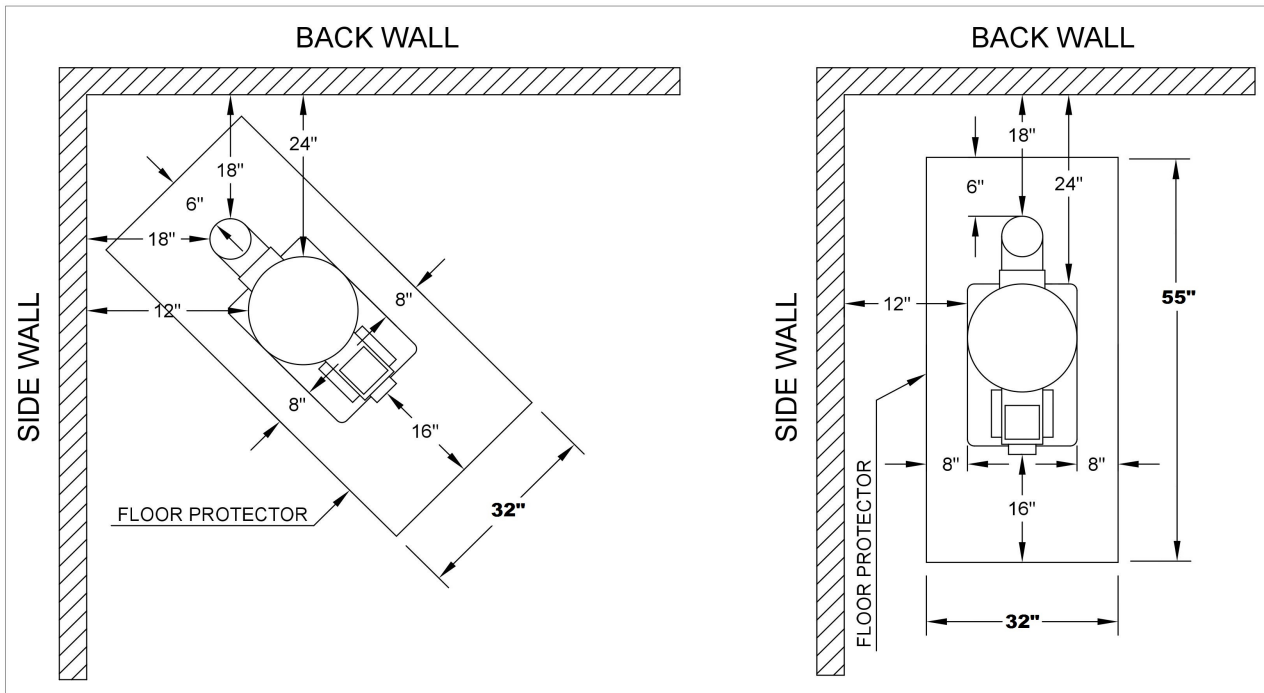
Serial Number:

TESTED TO UL 1482
NOT FOR USE IN MOBILE HOMES

DO NOT USE GRATE OR ELEVATE FIRE – BUILD WOOD FIRE DIRECTLY ON HEARTH. PREVENT HOUSE FIRES. INSTALL AND USE ONLY IN ACORDANCE WITH THE MANUFACTURERS INSTALLATION AND OPERATING INSTRUCTIONS. CONTACT LOCAL BUILDING AND/OR FIRE OFFICIALS ABOUT RESTRICTIONS AND INSTALLATION INSPECTION IN YOUR AREA. INSPECT CHIMNEY CONNECTOR AND CHIMNEY AT LEAST ONCE EVERY TWO MONTHS AND CLEAN WHEN NECESSARY. UNDER CERTAIN CONDITIONS OF USE, CREOSOTE BUILDUP MAY OCCUR RAPIDLY. DO NOT CONNECT THIS UNIT TO A CHIMNEY FLUE SERVING ANOTHER APPLIANCE. FLOOR PROTECTOR MATERIAL: A NRTL LISTED FLOOR PROTECTOR OR A NON-COMBUSTIBLE MATERIAL WITH A MINUMUM INSULATIVE R-VALUE OF 2.0. DO NOT OVERFIRE – IF HEATER OR CHIMNEY CONNECTOR GLOWS, YOU ARE OVERFIRING.

INSTALLATION IN RESIDENTIAL TYPE HOME

USE 6" INCH DIAMETER SINGLE WALL 24 GA. MIN. BLACK OR BLUED STEEL CHIMNEY CONNECTOR PIPE WITH A NRTL LISTED 6" INCH DIAMETER CLASS A HT-103 CHIMNEY SYSTEM OR MASONRY RESIDENTIAL TYPE CHIMNEY. (SPECIAL METHODS ARE REQUIRED WHEN PASSING THROUGH A WALL OR CEILING. SEE INSTRUCTIONS AND LOCAL BUILDING CODES). INSTALL AND USE ONLY IN ACCORDANCE WITH THE OWNERS MANUAL.



SIDE WALL TO UNIT	12" (305 mm)
BACK WALL TO UNIT	24" (609 mm)
CORNER WALL TO UNIT	24" (254 mm)
SIDE WALL TO CONNECTOR	18" (559 mm)
BACK WALL TO CONNECTOR	18" (241 mm)
CORNER WALL TO CONNECTOR	18" (559 mm)
CEILING TO APPLIANCE	36" (910 mm)
CEILING TO PIPE	16" (460 mm)
IN FRONT OF UNIT	24" (610 mm)

